

Aufbauanleitung für 82825

Gitterabstand vor Gebrauch für das jeweilige Kleintier prüfen!

Instruction de Montage 82825

Contrôler l'écart entre les grilles avant l'utilisation pour le petit animal !

Assembly Instructions of 82825

Check the distance between the bars for each animal before use.

Istruzioni per il montaggio di 82825

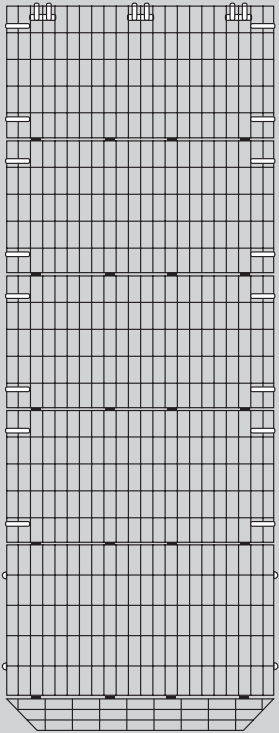
Prima dell'uso controllare la distanza delle barre per il rispettivo animale di piccola taglia!

KERBL Pet

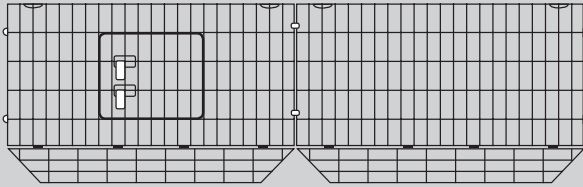
#82825



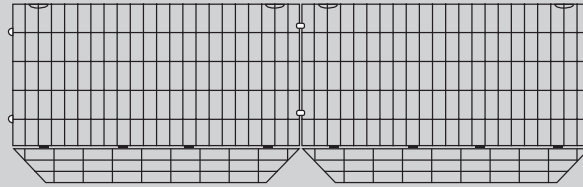
A 1x



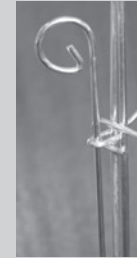
C 1x



D 1x



E 4x



F 6x



B 1x

